

R-20

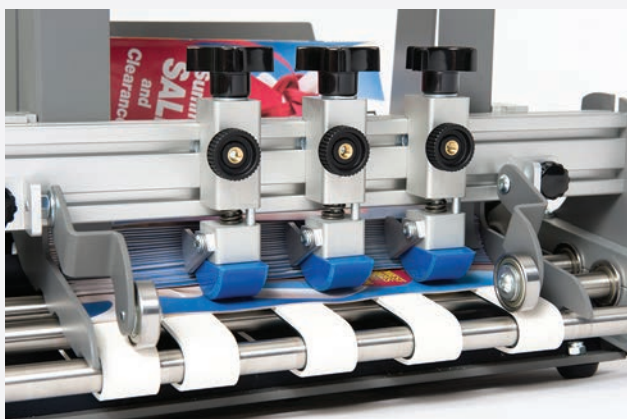
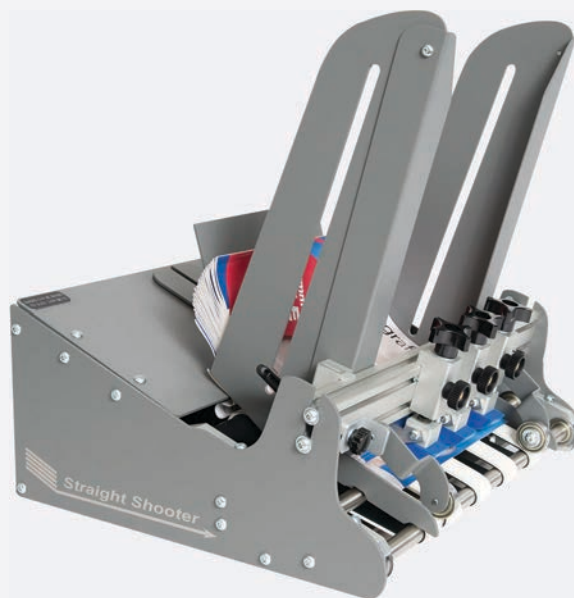
High-Speed continuous feeder

Feeders for mailing, printing and packaging

Straight Shooter feeders are known for revolutionary features, including:

- Buckle Separation™ for versatility
- Complete paper guides for straight feeding
- Repositionable feed belts
- Independently adjustable separators
- Simple 5 minute belt changes
- Quick, tool-less setup

Now these features and more are available in a wide format, our R-20 high speed friction feeder! The R-20 offers more feeder for your money than the competition. Now you can easily handle the wide stuff with a compact, cost-effective feeder that is as versatile as it is easy to use!



Buckle separation™ technology a Straight Shooter exclusive!

Straight Shooter introduced this revolutionary method of separation in 2004. Other feeders use a high friction "nip" point to separate documents. Straight Shooter eliminates the "nip" point for smoother feeding without the jams!

STRAIGHT SHOOTER EQUIPMENT COMPANY \ 580 AXMINSTER DRIVE, FENTON, MO 63026
PHONE (607) 334-6811 FAX (607) 336-2181 TOLL FREE (800) 785-4177 WWW.FEEDSTRAIGHT.COM

Patented Buckle Separation Technology™ • Patented Acceleration Table Technology™ • Additional Patent Pending © Straight Shooter Equipment Company

R-20

High-Speed continuous feeder

Feeders for mailing, printing and packaging

Until now, wide format friction feeders were too costly, too cumbersome, and too complicated. Straight Shooter changes all that with the R-20 wide format feeder. Combining simple, clean design with proven features, the R-20 makes it easy to run those large documents, while still handling the small stuff. With our optional card kit, the R-20 can handle small media down to 2" wide, without compromising the ability to feed large pieces.

The R-20 combines heavy duty design with lightweight versatility in a compact package that is easy to move from one application in your plant to another.

Now you don't have to buy multiple feeders to handle various jobs!

The R-20 comes with four independently adjustable separators and more feed belts than the competition for unlimited setup options, at a price they can't touch!

Also available:

- Adjustable height floor SS2420 stand
- Table stand
- Card option for small media
- Single shot and batch counting

SPECIFICATIONS

Media Handling:

- Width - 3" minimum* up to 20" maximum *2" min. with small media kit option
- Length - 2" minimum up to 17" maximum Thickness: Single sheet up to 3/8" thick
- Speeds - Up to 40,000 postcards per hour
- Power - 120 vac, 5 amp standard, (230 optional)
- Available interlocks - Dry contact, 12 vdc, 24 vdc, 24 vac. Others upon request.
- Dimensions - 23" wide x 17" long Weight: 45 lbs

